



2/653 Bank Street Te Awamutu NZ

3  **2**  **2** 

Enjoy the ease of low-maintenance living in this well-positioned home, perfectly located in the heart of town. Designed for comfort and practicality, the property features three generous bedrooms and two modern bathrooms, offering plenty of space for families, guests, or those seeking extra room.

At the centre of the home is a light-filled open-plan living area, ideal for everyday living and entertaining alike. This space flows effortlessly to a sheltered patio, creating a private outdoor retreat - perfect for relaxing or hosting friends year-round.

Completing the package is double internal access garaging, providing secure parking and excellent storage.

Type : House
Land Size : 406 sqm
View : <https://www.stonerealestate.co.nz/sale/nz/-/te-awamutu/residential/house/8590915>



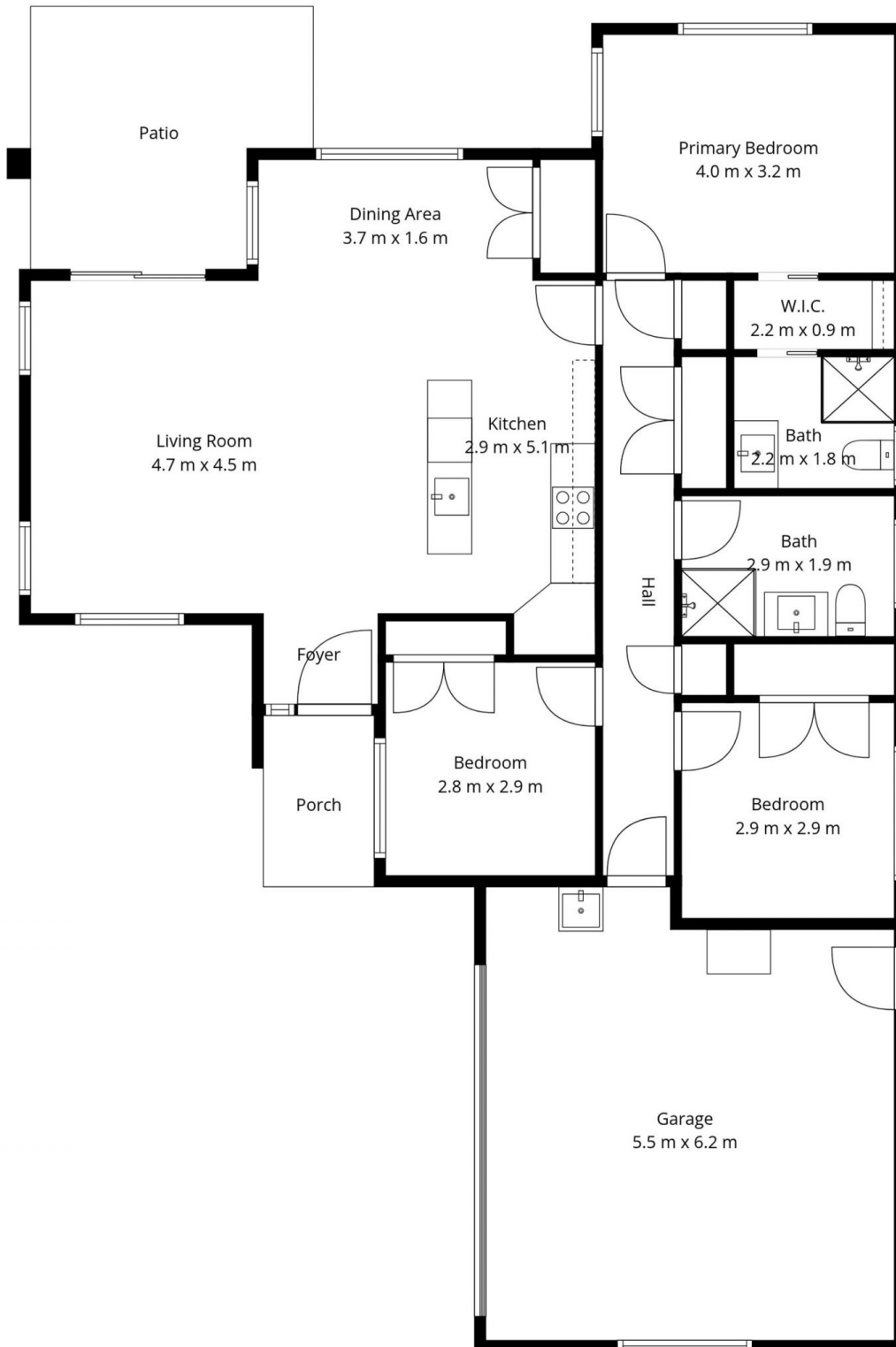
Braden Chick
07 871 5044

[For full version visit the website](https://www.stonerealestate.co.nz)

<https://www.stonerealestate.co.nz>
Your Real Estate Experts

2/653 Bank Street

Total Floor Area: 155 sq.m APPROX.



*in*House

This floor plan has been created by inHouse and are intended solely for marketing purposes, the floor areas mentioned also encompass the garage areas unless explicitly stated otherwise. The plans are not scale drawings, however, we've made every effort to ensure the accuracy of the information, but we cannot be held liable for any potential inaccuracies. We kindly request that you refrain from reproducing or distributing the floor plans without obtaining consent from inHouse.

2/653 Bank Street

Total Floor Area: 155 sq.m APPROX.



*in*House

This floor plan has been created by inHouse and are intended solely for marketing purposes, the floor areas mentioned also encompass the garage areas unless explicitly stated otherwise. The plans are not scale drawings, however, we've made every effort to ensure the accuracy of the information, but we cannot be held liable for any potential inaccuracies. We kindly request that you refrain from reproducing or distributing the floor plans without obtaining consent from inHouse.